



Show me how you would check your direction indicators were working?

Operate Hazard light switch, get out and check all 6 bulbs are working.



Tell me how you would check your headlights and taillights were working?

Operate the switch, walk around the car ensuring that all bulbs are lit.



Show me how you would switch on your rear fog light and when you would use it?

Turn on headlights, pull out the light switch so it clicks twice. Fog lights are used when visibility is less than 100m.



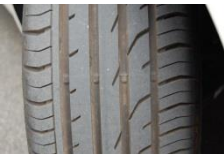
Show me how you switch your headlights from dipped to main beam and how you would know that full beam was on inside the car?

Operate headlight switch and pull arm towards the dashboard. There will be a blue light on the dials to indicate full beam is on.



Show me how you would check your brake lights were working, I can assist you, do not start the engine?

Switch on the ignition, without starting the engine, operate brake pedal, examiner will check or use a reflective surface.



Tell me how you check your tyres to ensure they have sufficient tread depth and that their general condition is safe to use on the road?

Ensure minimum tread depth is at least 1.6mm across the central ¾ of the breadth of the tyre, around the whole circumference and there are no cuts or bulges.



Tell me where you would find the recommended tyre pressures for this car and how tyre pressure should be checked?

Tyre pressure can be found in the manual or on a sticker on the drivers door frame. Tyres should be checked cold and with a reliable pressure gauge.



Show me how you would check the horn was working?

Press the centre of the steering wheel.



Identify the engine coolant reservoir, Tell me how you would check the level?

Open the bonnet, locate the reservoir and ensure the level is not above the maximum mark and not below the minimum mark.



Identify the windscreen fluid reservoir, Tell me how you would check the level?

Open the bonnet, locate the windscreen fluid and ensure there is a sufficient level.



Identify where you would check the engine oil level, Tell me how it is checked?

Open the bonnet, locate the dipstick. Remove the dipstick and wipe it. Re-insert, remove it and check the level is not above the maximum or below the minimum marks.



Identify the brake fluid reservoir, Tell me how you would check the level?

Open the bonnet, locate the reservoir and ensure the level is not above the maximum mark and not below the minimum mark.



Show me how you would set the demister controls to clear all the windows effectively?

Set the fan speed (1), adjust the temperature (2), set heater direction (3), press rear demister button (4)



Tell me how you would know there was a fault with your anti-lock braking system?

The ABS light will remain on after starting the engine.



Show me how you would clean the windscreen using the washer and wipers?

Push the button on the end of the wiper arm. Wipers will start and stop automatically.



Show me, or explain, how you would check the power assisted steering was working before starting a journey?

Apply turning pressure on the steering wheel whilst starting the engine. There should be a small but noticeable movement.



Tell me how you would ensure your head restraint is correctly adjusted so that it provides the best protection in the event of a crash?

Ensure the thickest part of the restraint is as close to the thickest part of your head as is comfortable..



Tell me how you would check your brakes were working, before starting a journey?

Pump the brake pedal. It shouldn't feel soft or spongy. The car shouldn't pull to one side under braking.



Show me how you would check your parking (hand) brake for excessive wear? Ensure you keep safe control of the car.

Whilst applying the brake pedal, release and re-apply the parking brake. Demonstrate that it hasn't travelled up too high and that the lever secures itself.